





KEY FEATURES

- 12" to 16" options available
- 24 & 22 gauge Tru-Gauge™
- Floating clip system: allows for expansion/contraction of panels in longer lengths
- 2" Mechanical seam rib, 180°: Factory notching available
- Factory injected Butyl sealant
- Structural panel that will span up to 5' over open purlins
- Concealed fasteners: fasteners cannot leak
- Manufactured in Riverside CA, Sacramento CA & Salem OR
-  ICC EVALUATION SERVICE™ ICC-ESR #5046 with CBC-CRC Supplement
- FM Global Class #4471 Approved
-  - Code compliance UL Evaluation Report UL ER 25913-01
- UL Construction No. 90, 176, 180, 238, 238 A-C, 435, 435 A, 437, 449, 451, 452, 487, 506, & 506 A-C
- UL 580 Class 90 Wind Uplift, UL 790 Class A Fire rated and UL 2218 Class 4 Impact (hail) rated
- Dade PA 201-94 Class 90 Impact, 140 MPH Wind Uplift
- FM I-75 (60" o.c.)
FM I-120 (24" o.c.)
- ASTM E283 - Air infiltration (walls)
ASTM E331 - Water infiltration (walls)
ASTM E1592 - Structural uniform static air pressure
ASTM E1646 - Water infiltration (roof)
ASTM E1680 - Air infiltration (roof)
ASTM E2140 - Water test for full immersion hydrostatic roof systems
- Weather tightness warranty available
(Contact TMP representative for details)
- 1/2:12 minimum pitch recommended
(For lower pitches, please inquire)
- Standard panel lengths 5' to 60' - not notched
Standard panel lengths 1' to 60' - notched
(For longer panel lengths, please inquire)
- On-site roll forming available for long lengths
- Panel options: Striations, Accent Ribs, and Flat Pan
- Retro-fit systems available

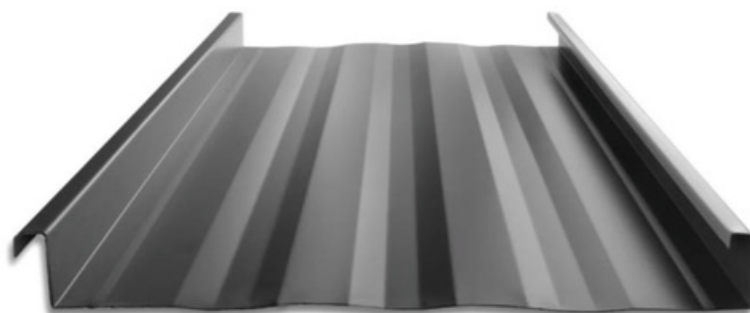


- Prevents crowning
- No visible screws required
- Sharp, professional appearance

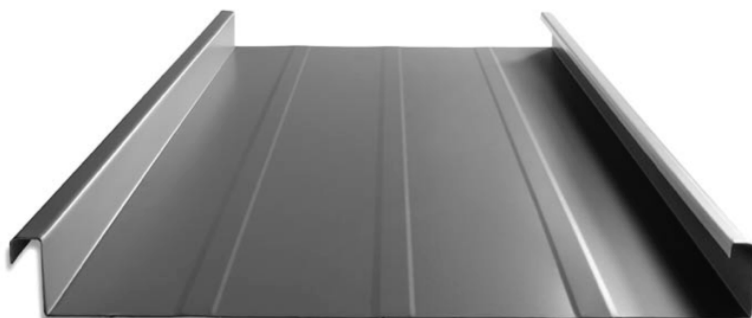
PANEL PROFILES

 ICC EVALUATION SERVICE™ ICC-ESR #5046

12", 14" and 16" coverage options

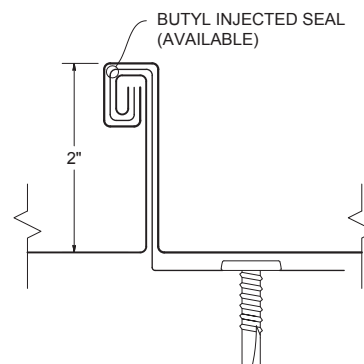


STRIATIONS



ACCENT RIBS 2 Accent ribs for 12" to 14" panel
3 Accent ribs for 16" panel

180° SEAM DETAIL

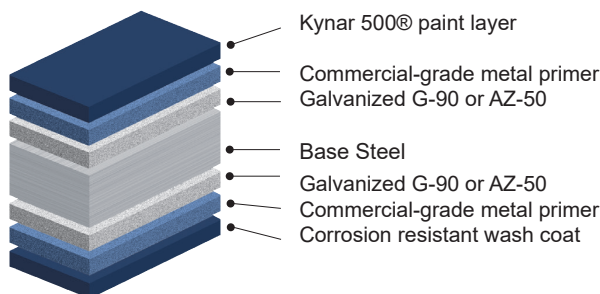


MATERIAL SPECIFICATIONS

- 24 gauge Kynar 500® Painted Steel
.0236" (Thickness prior to painting)
Galvanized G-90 or AZ-50
- 24 gauge bare Zincolume® Plus AZ-55
(No finish warranty – 25 yr. perforation warranty)
- ▲ 22 gauge Kynar 500® Painted Steel
.029" (Thickness prior to painting)
- 22 gauge Rusteel Plus™ (A606)
- Kynar 500® and substrate testing data available
(See website)
- "Oil canning" is an inherent characteristic of roof and wall products, and not a defect, which is not a cause for panel rejection

KEY FEATURES

- 21 Standard Colors, 5 Metallic Colors and 4 Specialized Colors
- Kynar 500® Paint System - the ultimate in exterior durability and color retention
- "Cool" color pigments are specially designed to reflect infrared light, reducing heat gain to dwelling, and conform with ENERGY STAR® criteria
- Superior Quality, two coat, 70% resin finish, applied at a 1 mil. thickness
- 40 year residential paint warranty
- 20 and 30 year commercial paint warranty: Contact TMP for warranty specifications

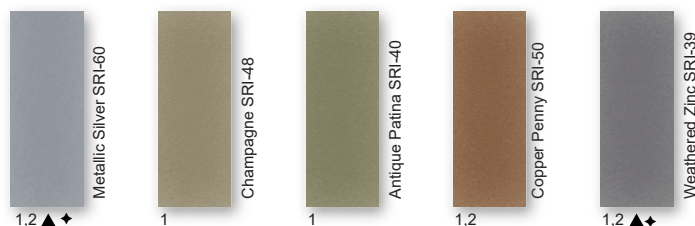


40-Year Residential / 20 and 30 Year Commercial Manufacturer's Limited Warranty

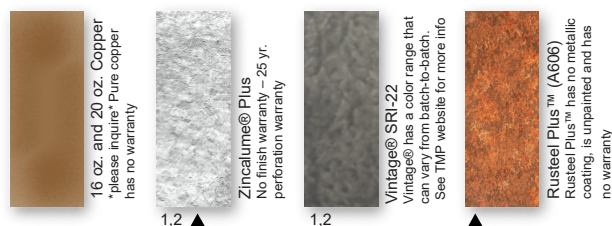
STANDARD COOL KYNAR 500® COLORS



PREMIUM METALLIC COOL KYNAR® COLORS



SPECIALIZED MATERIAL



These printed chips provide a close representation of the colors.

Metal samples are available upon request. Coatings are low gloss 10-15% sheen.
SRI = Solar Reflective Index. SRI values listed above are in accordance with ASTM E 1980 and are based on actual testing. ***Oil canning is not a cause for material rejection***

Standard Panels				
Width	Gauge	Color	LBS SQFT	LBS LF
14"	24	1	1.36	1.65
18"	24	2	1.28	1.93
18"	22	▲	1.61	2.42
16"	.032 Alum	◆	0.60	0.90



steelscape

